

Project Profile: PD Ports, Teesport

Project: PD Ports Rail Bridge - Deck Repairs

Client: PD Ports



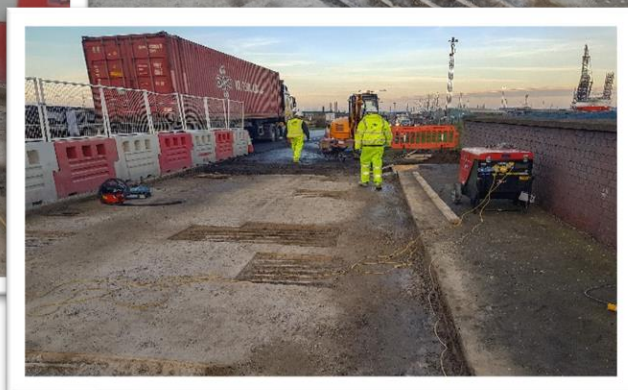
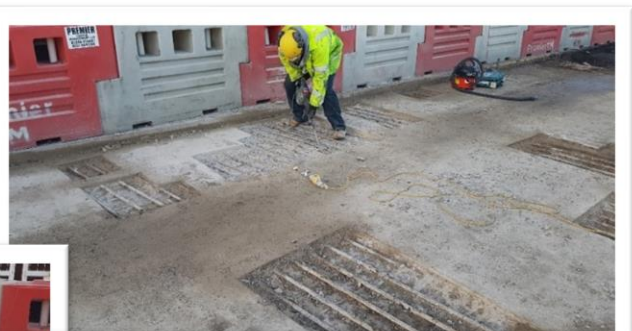
The project: PD Ports is a UK ports business headquartered in Middlesbrough, Northeast England. The major deep-water complex of Teesport is one of the largest container ports in the North of England, handling over 4,350 vessels a year and around 27 million tonnes of cargo, with a road access bridge which crosses two railway lines serving Teesport carrying a wide single lane carriageway that provides primary access to its No.1 and No.2 Quays. The carriageway surfacing was showing signs of failure and deterioration to the R.C. deck beneath



was also evident. **APA Concrete Repairs Ltd** were appointed to undertake concrete repair works to the top surface of the railway bridge deck, without disrupting crucial HGV access to and from the bustling port.



The solution: Working under single lane traffic management, and once the bridge deck had been exposed, the repairs were marked out and cutting and breaking out of the failing areas commenced. It was clear from the type of corrosion on the buried reinforcement that chlorides were present in the upper surface of the concrete. Therefore, as time was at a premium, **APA** suggested the use of galvanic protection (sacrificial anodes) to the perimeter of the repairs and reinstatement of the patches using a high strength rapid setting repair mortar.



The outcome: The repair works to the carriageway deck of the Teesport Rail Bridge were completed on time, within budget and without disruption to the port, which was the Client's critical requirement. The use of high strength rapid deck repair materials by **APA** enabled the bridge deck waterproofing and resurfacing to commence ahead of schedule, and the

introduction of the sacrificial galvanic anodes, again by **APA**, added durability and longevity to the repaired bridge deck without adding any delay to the programme. Further solutions to the presence of chlorides were provided by **APA** but time was the limiting factor for PD Ports on this particular project.



Materials Utilised:

- Nufins Deck Repair Rapid
- Sika Galvashield XPT Anodes

For further enquires please contact:

E-mail: sales@apaconcreterepairs.co.uk

Tel: 01422 379640

Northern Office

APA House
171 Huddersfield Road
Bradford
West Yorkshire
BD12 0TQ
Telephone: 01422 379 640

Southern Office

Nicholson House
41 Thames Street
Weybridge
London
KT13 8JG
Telephone: 0208 853 0627

E-mail: info@apaconcreterepairs.co.uk

Web: www.apaconcreterepairs.co.uk

